

MM3 MANUAL

Please read “the safety guide” before
use and it in a proper manner.



All the information of user manual and programs in CD can be downloaded at the [m3mobile](http://m3mobile.com) homepage.

Note

- This manual is subject to copyright protection along with all relevant rights.
- No part of this document can be copied, reproduced, changed or translated in whole or in part by any means without prior written consent of M3 Mobile Co., Ltd.
- The content of the manual is provided “as-is” and be subject to change at any time without notice.
- M3 Mobile Co., Ltd. makes no warranty of any kind with regard to this manual, including, but not limited to, the implied warranties of merchantability and fitness for a particular purpose.
- Microsoft, ActiveSync, Windows, Windows logos, Windows Mobile 6.1 logos are trademarks, or registered trademarks of Microsoft Corporation in the United States and/or other countries. Microsoft OEM products are licensed by Microsoft Licensing Inc., a entirely owned subsidiary of Microsoft Corporation.
- All other product names in this document or product are company names, trademarks or registered trademarks of the respective owners.

Copyright and Agreement

- This user manual is provided “as-is”. It may contain editing error or omitting due to the difficulty of expressing technical feature.
- If an application program provided by other supplier using by MM3, refer to the supplier for a program manual.
- The application program providers have the responsibility of indicating their contact number for customer service on MM3 terminal, item box, or program.
- M3 Mobile Corporation do not warranty any programs produced and added by the third software companies after MM3 products are distributed from factories.
- M3 Mobile Corporation has the right to ask warranty of any programs to the program providers to meet the needs of mobile networking companies.
- The contents in the user’s manual are protected under the Software Copyright Act. Copy, reproduction, distribution of the contents in the user’s manual without any written agreement notice of M3 Mobile Co. Ltd., is considered as criminal actions.
- Windows, MS Office, Outlook, ActiveSync, Internet Explorer programs are the registered brand of Microsoft.
- MM3 is the registered brand of M3 Mobile Co. Ltd.
- The brands of other products and service referred in this manual belong to corresponding providers.

Caution when using MM3 (1)

- User Caution

- When the unit is lost or stolen, notify to network provider immediately.
- Do not rent the unit to third person without authorized permission.
- Do not use the unit while driving.
- For technical help, contact designated service centers.
- Contact responding suppliers directly for questions on applications and work programs other than hardware and basic installed applications.
- Use supplied adapter and accessories by M3 Mobile Co. Ltd.
- Any defect on a unit while using other batteries, chargers and accessories can not get warranty.

- Carrying and Storage Caution

- Avoid to use the device under high temperature and humidity. It may cause fatality to the device.
- Avoid intentional dropping from high elevation. It may cause fatality to the device.
- Charge batteries fully before the first time use of the device.

Caution when using MM3 (2)

- Do not reconstruct
 - Do not reconstruct MM3 for any purpose.
 - It may cause fire in the unit, and wound or electric shock to users.
 - Any defect caused by reconstructing units, can not get warranty.
- Illegal copy of mobile phone is prohibited
 - The person who reproduces mobile phone and uses this mobile phone is considered as criminals.
 - The use of lost or stolen mobile phone is considered as a criminal act.
 - Keeping the lost or stolen mobile phone after turning power off, is considered as a criminal act.

Size and Features

Used frequency bands		Tri-Band(TX) : UMTS / HSDPA 850 / 1900 / 2100 MHz Quad-Band(RX) : GPS 850 / 900 / 1800 1900 MHz
Band width		200 KHz (GSM) / 5MHz (3G)
External appearance		88 x 215 x 61mm (Width x length x height)
Weight		570g (battery included)
Operational Temperature	Main body	-20 ℃ ~ +50 ℃
	Adapter	-20 ℃ ~ +50 ℃
Relative Humidity		5% ~ 80%
AC Power		Input : AC 100 ~ 250V, 50 ~ 60Hz Output : DC 5.2V, 5A



Supported Frequency Bands can differ depending on the supplied antenna.

• Note	2	LED/Battery attaching/detaching	16
• Copyright and Agreement	3	Charging	17
• Caution when using MM3	4	How to connect to PC	18
• Size and Features	6		
1. MM3 Introduction	9	2. Basic Usage	19
Product Composition	10	Main screen	20
Name and function of each part	12	Input screen	21
Input Buttons	13	3. ActiveSync	26
Soft/Hard Reset	14	ActiveSync Introduction	27
How to use stylus pen	15	Installing ActiveSync	28
		Synchronization of data	29

Contents

4. How to use internet	30	6. Usage of Device	47
Via HSDPA	31	Camera	48
Via Wireless WLAN	33	Bluetooth	52
Browsing the Web Site	36	GPS	56
5. How to use the Phone	41	Scanner	57
Init Screen	42		
Phone Control	43		
Phone call and receive	44		
Phone book	45		
SMS send and receive	46		



1. Introduction

- Product Composition
- Name and Function of each part(MC-8000S)
- Input Buttons
- Soft/Hard Reset
- How to use Stylus pen
- LED Battery Attaching/Detaching
- Charging
- How to connect to PC

Product Composition (1)

- At the first time of opening the product box, please check if it contains all the basic components, listed as following.



MM3 main terminal
+ 2 units of standard battery



Cradle



USB Cable



Portable Adapter



CD

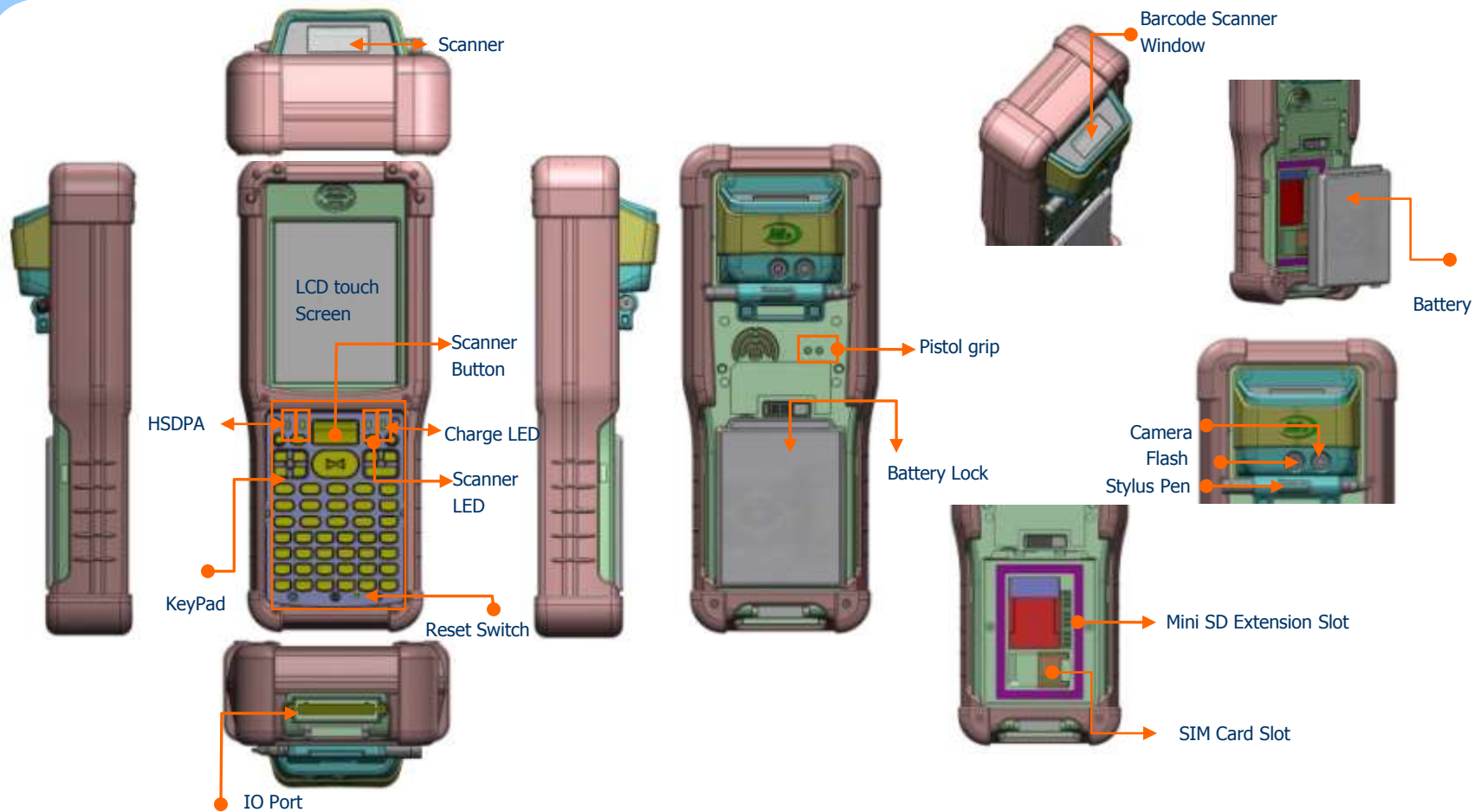


MANUAL

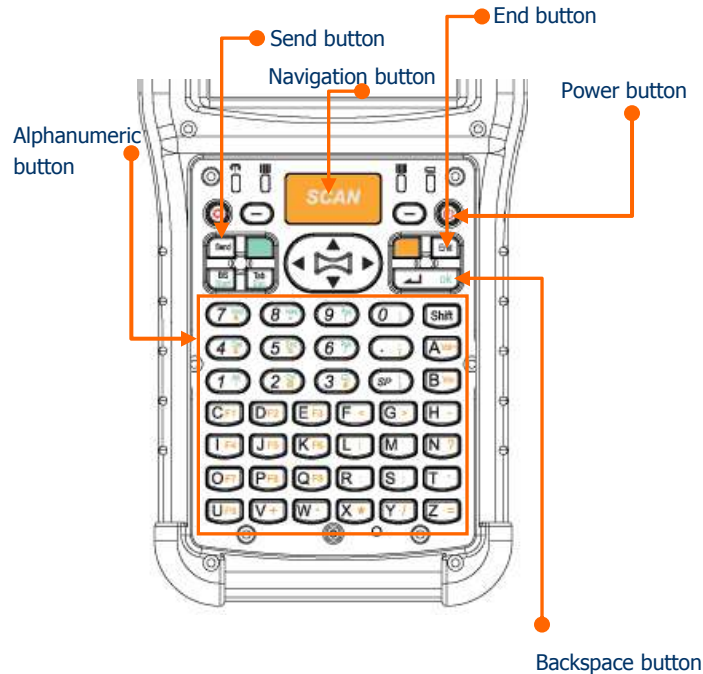
 The product components may differ depending on the supplied products.

- How to use the manual
 - This manual provides detailed information to make using the device easier and faster.
 - The content related to phone or communication in this manual is only applicable when the device is equipped with HSDPA module for Voice and Data communication.
 - The features described in this manual can not be used when it is not equipped in the device (WWAN, WLAN, Bluetooth, IrDA, Scanner, Camera, GPS).
 - The content of this manual is subject to change without prior notice due to product improvement or modification of its functions, etc.


Names of each part (MC-8000S)



Input Button



Component	Description
Power button	Press to toggle the device on/off.
	Long press to menu (Backlight, Display, etc) Function
Phone/Call function	press to accept the call or to execute the phone
End function	press to hang-up/reject the call.
Input keys	Press to input alphabet characters or numbers
Left, right function button	press to lunch an assigned application or function
Alphanumeric	press to switch between alphabet and number input
Start button	Press to display the Start menu.
Backspace button	press to move back
Function button	press to Function Key with (*, 0, #)
Direction button	press to move left,right and up,down
Return button	press to confirm the action
Scanner button	Press to launch the barcode data scan application
Camera button	Press to launch the Pictures & Videos
Volume button	Press the top key to increase volume, press the bottom key to decrease volume.

 Some key functions might not be supported, depending on the option.

Soft/Hard Reset



- **Soft Reset**
 - A soft reset allows your device to get a fresh start, similar to rebooting a computer.
 - This restarts your device and adjusts memory allocation.
 - All records and entries are retained after a soft reset.
 - Unsaved data in open programs may in some cases be lost.



- **Hard Reset**
 - A hard reset removes power to your device.
 - This erases all records and entries, deletes all additional programs you have installed, and restores the device's default factory settings.
 - Never perform a hard reset unless a soft reset does not correct your problem.



Please mind that you need to set up the standard timezone date, and time. After power off.

How to use Stylus Pen

- **Tap**

Tap the touch screen one time using a Stylus pen to select and execute items and files.



- **Drag**

It is used when you select the text. Please drag the desired part with stylus pen attached on the screen.



- **Long Press**

Leave Stylus pen touching the screen for long and you can select the menu on the pop-up screen.

You can also select functions available in the designated item using the pop-up menu.

The function of the pop-up menu can be different according to the program.



LED / Battery attaching/detaching

- LED Alarm
 - Informs Charging, Scanner Status.

Type	LED Status	Details
LED for charging	Red Green	Charging Charging complete
WWAN Status LED	Blue Blinking	WWAN Standby (within range of phone/internet)
	Blue On	WWAN in use (phone/SMS/internet in use)
	Blue OFF	WWAN is off or out of range
Scanner LED	Green	When the barcode data is successfully read

- Battery attaching/detaching

- Attaching Battery

As picture shown, put the battery pack to back of PDA, and lock the battery pack with locking device.

- Detaching Battery

Press locking device to the right, then using upper notch, detach the battery from main body.



Charging

- Connect plug-in from charger to charge jack of main body, or charge jack of cradle, and then place main body onto cradle.

- Charging LED

Type	LED Status	Details
Direct charging to main body	Red Green	Charging Charging Complete
Cradle Charging (Extra battery charging)	Red Green	Charging Charging Complete

- When charging, the status of the battery attached to main body can be confirmed by the LED left of upper corner of main body. Also the status of Sub-battery can be confirmed by the LED right of low corner of Cradle.

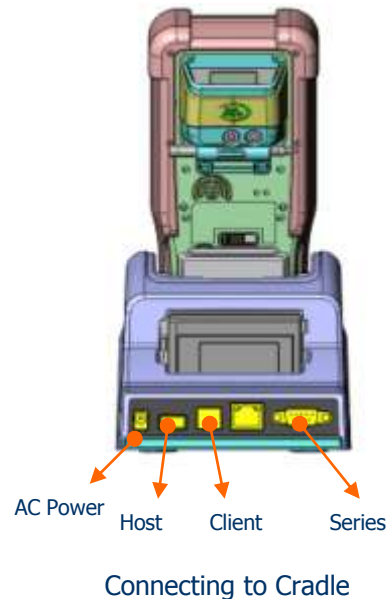
- Charging in Cradle



- ⚠ Do not use any other charger except one (5.2 V / 3A) provided .
- ⚠ Make sure to handle it gentle; damage with excessive force may cause no warranty.
- ⚠ Risk of explosion if battery is replaced by an incorrect type.
- Dispose of used batteries according to the instructions.
- ⚠ When attached battery is completely discharged, plug charger to main body, then reset the device to check if screen is back on. To use, do at least 10 minute charging.

How to connect to PC

- A cradle of MM3 supports charging and USB connection.
- Connecting step of cradle of MM3 is as following.
 - Connect charger to USB cradle. (24pin connector)
 - Connect charger to power source. (to wall)
 - Connect USB cable of USB cradle to USB port of desktop PC.
 - Place MM3 onto docking cradle then execute Synchronization with Desktop PC.
- The location of USB port can be at the back, front or side of PC and the shape of USB port is identical on Desktop PC and Notebook.
- USB host function is available by putting USB cable into USB port of Cradle.



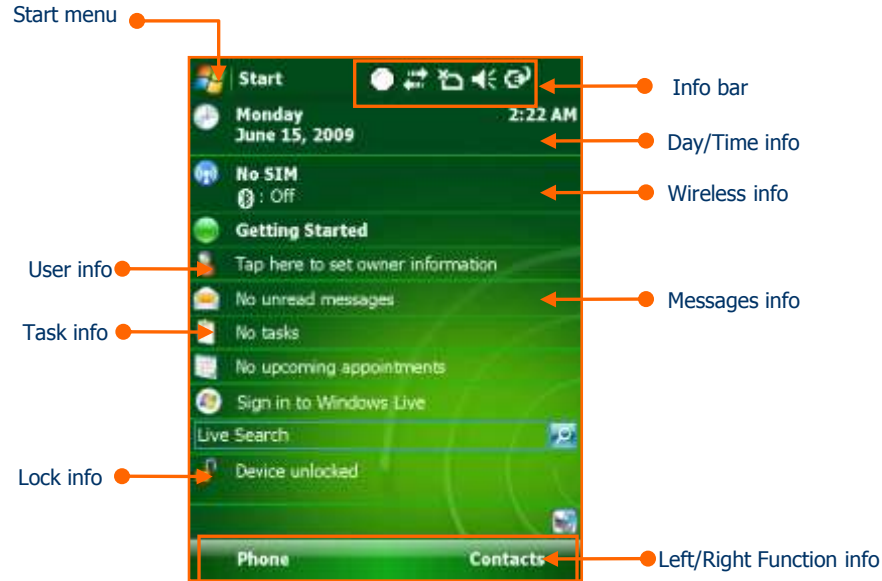


2. Basic Usage

- Main screen
- Input Screen

Main Screen

- Main screen
 - Main Screen is set below



Button	function
Start menu	Select the program you want to use.
Info bar	View the power, modem, sound, input mode and connecting view.
Day/Time info	View the current date and time.
Wireless info	View the Wireless power and state.
User info	View the personal information.
Messages info	View the Messages received.
Task info	View the task information.
Today info	View the Today's information.
Lock info	View the screen / Lock information.
Pocket MSN info	View the Pocket MSN information.
Left/Right Function info	View the Left / Right information.

Input Screen (1)

- To use Input
 - Process this program " Start > Office Mobile > Word Mobile".
- To use the Keyboard Input



Tap the arrow next to the keyboard icon and then select the keyboard on the menu screen as a picture above.



This is the Keyboard Input Screen.



You can input the letter, number and characters when you click the each icon on the keyboard Input screen.

Input Screen (2)

- Usage of Block Recognizer input.



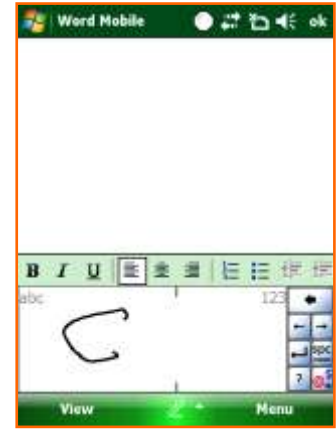
Tap the arrow next to the keyboard icon and then select the Block Recognizer on the menu screen as a picture above



It is the screen of block recognizer input.



In this input screen you can input letters in 'abc' and numbers in '123' each in the input box seen on the screen.



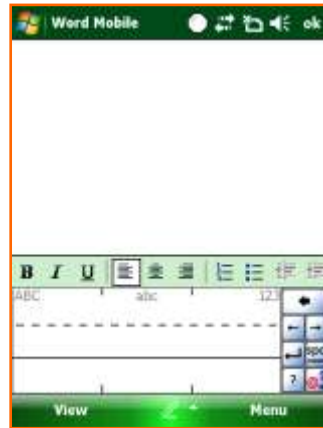
In the input screen of block recognizer you can input special letters and characters by tapping the input box once.

Input Screen (3)

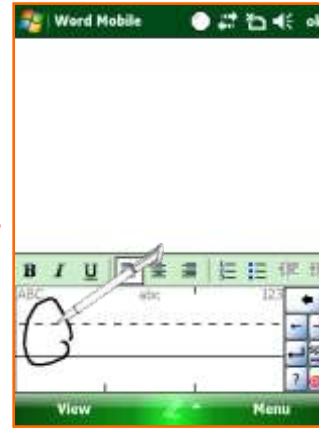
- Usage of Letter Recognizer



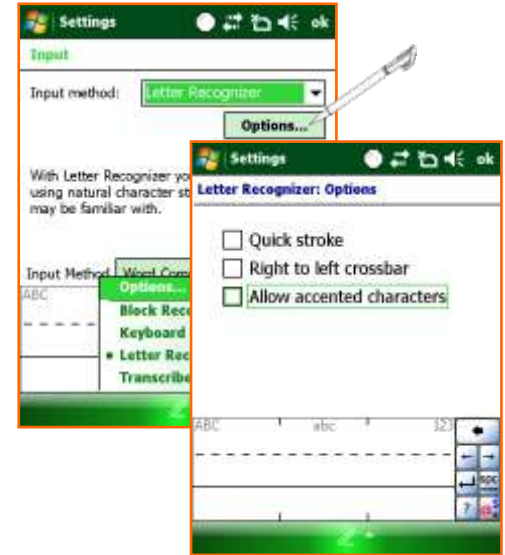
Select the arrow next to the keyboard icon and then Select the 'Letter Recognizer' on the menu screen as the picture above.



This is the 'Letter Recognizer' screen.



In the 'Letter Recognizer' input screen, you can input the capital letters in 'ABC', the small letters in 'abc' and numbers in '123' each in the input box seen on the screen.



Please choose 'Options...' on the input menu. Select 'Letter Recognizer' as input method and then click 'Options...'. Here you can configure the input modes.

Input Screen (4)

- Using transcriber input
 - Transcriber is a writing recognizer program. It provides you various writing input and input menu.



Select the arrow next to the keyboard icon and then select the Transcriber on the menu like the picture.



This is the Transcriber input screen.



If you input letters, numbers and characters on the screen with the stylus pen, it would be written automatically on the place where the cursor is blinking. You do not have to concern about the input box when using transcriber.

Input Screen (5)

- Input by using Keypad
 - You can input numbers and letters by using Keypad.



Convert '1 ,A, a' using the input convert button on the input screen as the left picture. Then you can input capital letters, small letters, numbers and characters using keypads.

For example, in the case of inputting the M3 SKY, Convert to 'a' > Keypad 6 > convert to '1' > Keypad 3 > Convert to 'A' > Keypad 7(4 times) > Keypad 5(twice) > Keypad 9 (3 times)

By pressing '*', '0', '#' while 'Fn' button is pressed, you can apply 'Space', 'Enter' and 'OK' function respectively.

Pressing 'Fn' Key will change the function mode in following order : 'Fn' one time mode -> 'Fn' hold mode -> 'Fn' disable mode



3. ActiveSync

- ActiveSync Introduction
- Installing ActiveSync
- Synchronization of Data

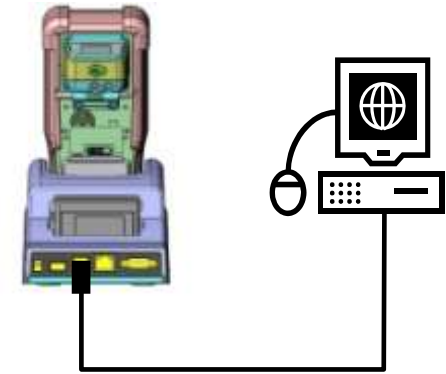
- Sync is an abbreviation of “Synchronization” and refers to the process of making data in PDA and desktop computer to be same by linking both data.
 - Sync is an abbreviation of ‘Synchronization’ and refers to the process of making data in PDA and desktop computer to be same by linking both data. When either PDA or PC modifies data, it updates others to the most recent data.
 - Not all the data is synchronized at same time. It follows the option settings of ActiveSync, provided by Microsoft.
- By linking MM3 and computer, you can make data in both devices in the same status (synchronization) or install, copy, move, delete programs for business purpose and others.
- It is compulsory to install this program in order to install business programs, synchronize data, back up and synchronize contact numbers in an address book, etc.



Do not connect USB of Cradle to desktop PC before installing Active Sync to desktop PC.. It may cause a desktop PC cannot recognize PDA since Active Sync contains PDA program driver.

ActiveSync install / connect

- To install ActiveSync
 - Select the ActiveSync program in the CD provided, and then install it to the computer.
 - Once the installation is complete, connecting window will start. Connect the cradle with PC using USB cable, and then dock the device on the cradle.
 - When the device is recognized on the PC, Connection will be established after assigning the port for it automatically.
- The definition of Partnership
 - It is the process of paring PC with PDA in order to exchange the data each other. Via this process, the data on the PC and on the PDA can be synchronized.
 - ※ The synchronization is available with Outlook 2003 or above version. It is not supported on the outlook express which is provided together with Windows OS.



USB connection to PC



Please re-try the synchronization if connection is disturbed by strong noise or static.

-To install ActiveSync on the host computer, download version 4.1 or higher from the Microsoft web site at <http://www.microsoft.com>. Refer to the installation included with the ActiveSync software.

-Microsoft recommends installing ActiveSync on the host computer before connecting the mobile computer.

Synchronization of Data

- If you see the Microsoft ActiveSync window in the desktop PC, you can find an option icon. If you click this option icon, taps such as "Sync Options", "Sync Mode", "Rules" will appear.
- "Sync Options" is a menu that you can select an item to synchronize.
 - Contact, Calendar, E-mail, Tasks, Memo, Favorite, Files, Media, etc.
- "Sync Mode" enables you to choose synchronization methods. According to the selected synchronization mode, there are 3 following methods:
 - Continuously while the device is connected: In this mode, if you want to carry out synchronization, connect the device to the desktop computer. ActiveSync will immediately start synchronization and synchronize according to the user's input of changes in a computer or the device.
 - Only upon connection: If you want to carry out the synchronization after the first synchronization on a manual basis, click Sync.
 - Manually: In this mode, ActiveSync will not run automatically. In order to carry out synchronization, click Sync.
- Synchronization is the process of updating M3 and desktop PC after comparing their data. Any files including personal organizer management data, etc in M3 can synchronize with those in the desktop PC.

When Troubleshooting the ActiveSync, Check the solutions below.

- Ensure the correct USB cable is used in the cradle with USB port of the PC.
- Ensure the power input cable of MM3 or LCD.
- Please re-try the Synchronization after Soft-reset or Hard-reset. Finish the running program and save the data for sure before resetting.

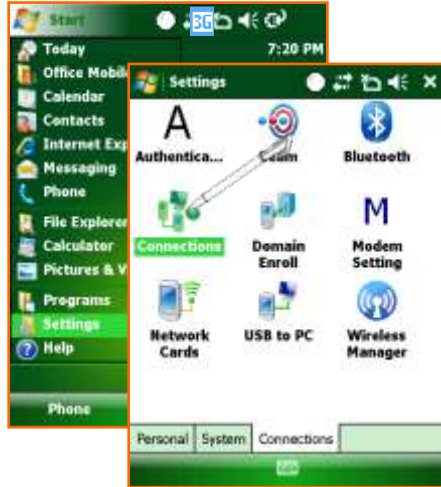


4. How to use Internet

- Via Wireless HSDPA
- Via Wireless WLAN
- Browsing the Web Site

Via HSDPA (1)

- To connect to the Internet via Wireless WAN (1)



Tab 'Start > Settings > Connections'



Select 'Add a new modem connection' of 'My ISP' in the 'Connections'.

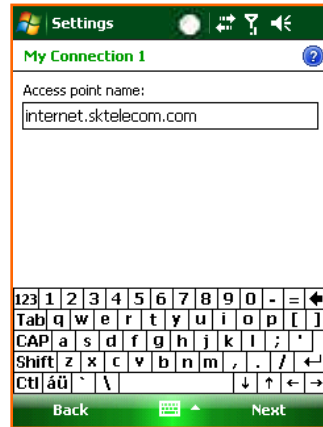


Put the name you want into the 'Enter a name for the connection'. Then select the 'cellular Line(GPRS)' in the 'Select a modem'.

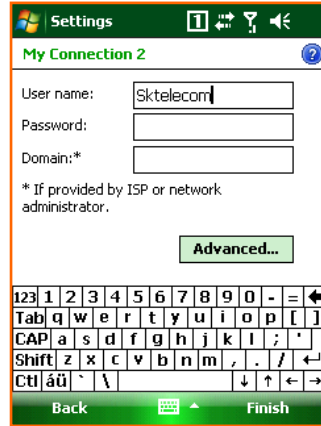
- ⚠ WWAN service is optional.
- ⚠ It is not available in the device which does not have WWAN module installed.

Via HSDPA (2)

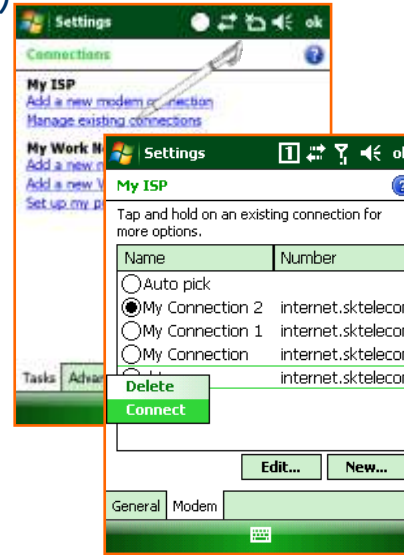
- To connect to the Internet via Wireless WAN (2)



Input the Access point name suitable to the SIM Card / Operator company of Network then Tab the 'Next'.



Tap the 'Finish' after input the User name and password according to the setting. (In some cases, it is required to set IP address at the advanced menu.)



Select the 'Manage existing connections' on the Connections. Choose the ISP which you want to connect to as picture above. * The saved settings automatically applied at connecting.



You can explore the Internet using WWAN connection.

Via Wireless WLAN (1)

- You can use the Wireless Network Via Wireless LAN.
- MM3 supports IEEE 802.11b and 802.11g.
- To connect the Wireless LAN (AP must be on and functioning)

To connect directly on the Main Screen




On the Today Main screen, you select Wireless state bar or go to 'Start > Settings > Connections > Wireless Manager'.



Tap the WI-Fi on the 'Wireless Manager' to turn WLAN on.



When the dialogue box is appeared, Select the AP you want and then, you can connect the Network with it.

 Wireless LAN is optional. You can only use WLAN, when the WLAN module is built in to the device.

Via Wireless WLAN (2)

- To connect via Wi-Fi menu



On the settings screen, you select Wi-Fi Icon.
You can also tap Start > Settings > Connections>Wi-Fi.

Configure the connect type then click the 'Next'.

After configure Network authentication, tap the 'Finish'. You can see the wireless Networks available.

Via Wireless WLAN (3)

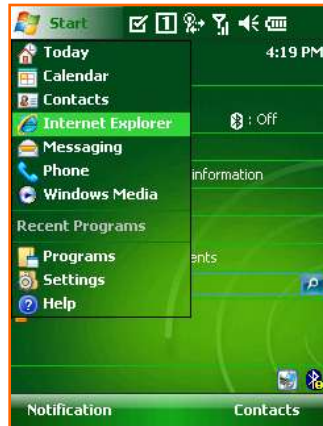
- Continue from the last page
 - Configure DHCP / Static IP



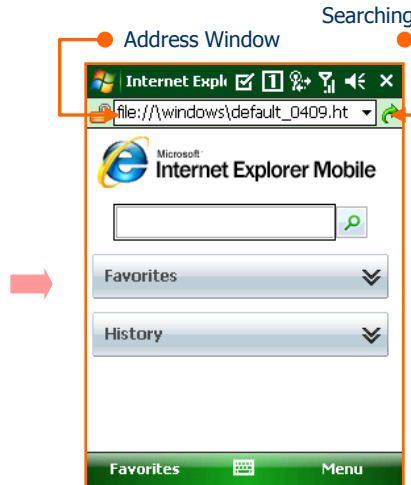
Browsing the Web Site (1)

- Microsoft Internet Explorer
 - Via Wireless WAN , Wireless LAN and Active sync connection, you can browse the web.
 - You can download programs and files by accessing the Internet.

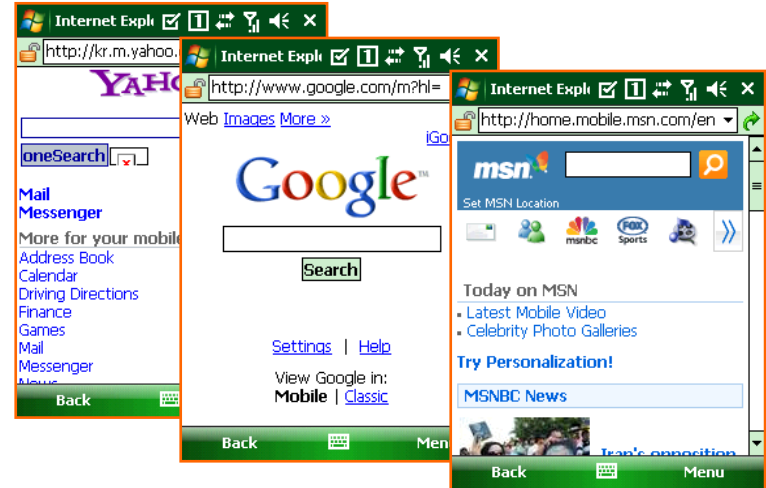
To use the Internet Explorer



Tap 'Start > Internet Explorer



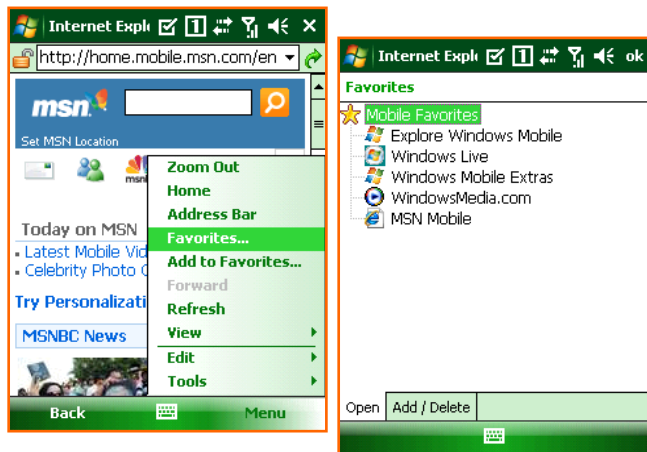
This is the Internet Explorer processing screen.



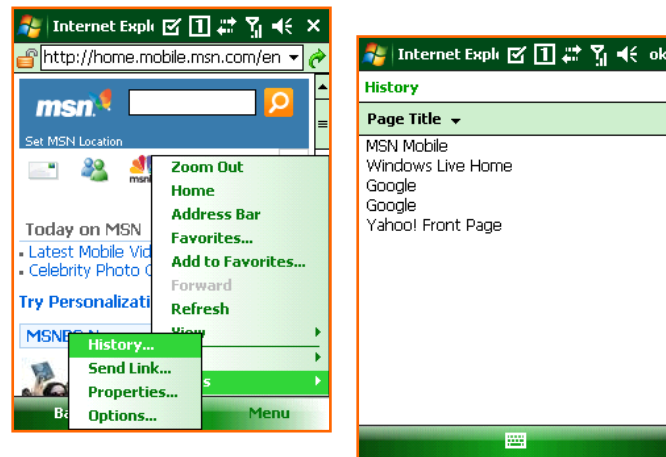
Input the address you want on the address window in upper of the screen, then click the 'search'. It will try to connect to that web address via Wireless network that is connected.

Browsing the Web Site (2)

- Continue from the last page.



On the 'Menu > Favorites...' you can see the list of sites that you have saved and browse to it directly. The favorite page is like the picture above.



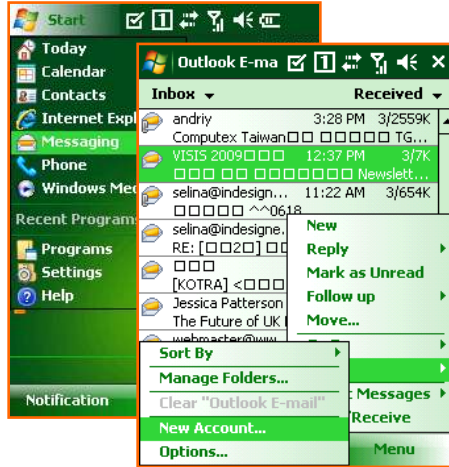
On the Menu > History... You can see the list of sites that you have recently visited. The history page is like the picture above.



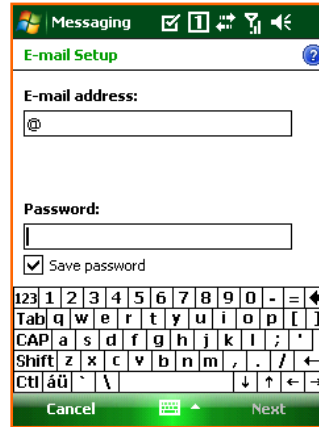
See the 'Start > Help' if you want to know more about how to use the Internet Explorer

Browsing the Web Site (3)

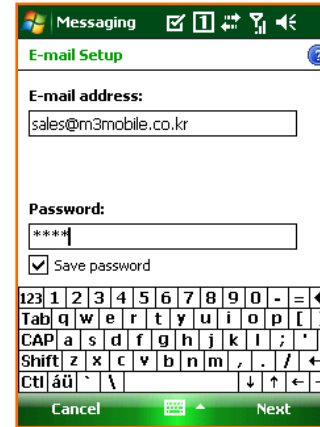
- To set up an e-mail account



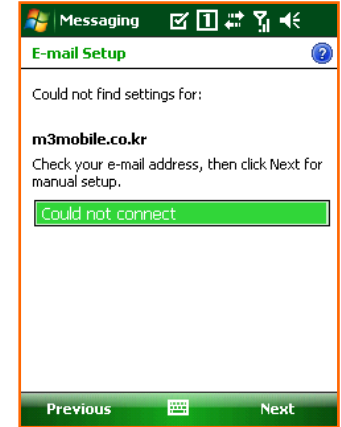
Process the 'Start > Messaging'. Select the 'Menu > Tools > New Account...' in the Outlook E-mail box.



Set an E-mail provider for 'other' then tap 'Next.'



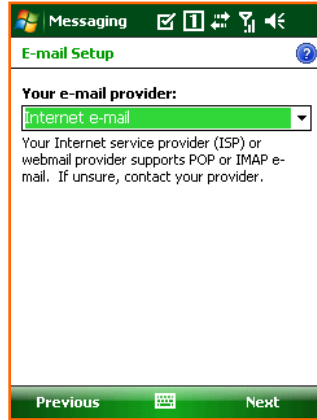
Input the E-mail address on the Enter e-mail address, then tap 'Next'.



When the Status is for completed, tap the 'Next'.

Browsing the Web Site (4)

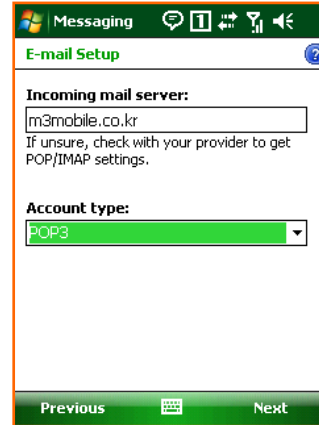
- Continue from last page



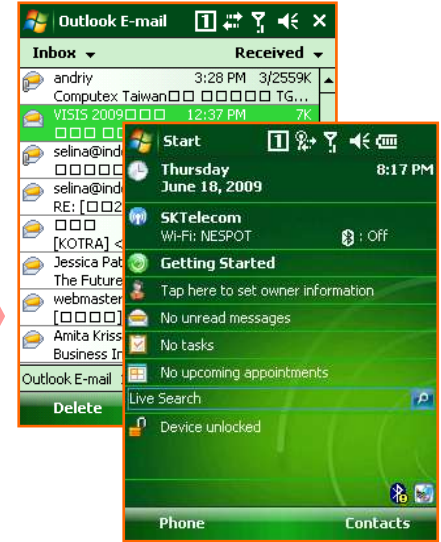
Set an E-mail provider for 'other' then tap 'Next'.



Select the Account Type and put the Name then tap 'Next'.



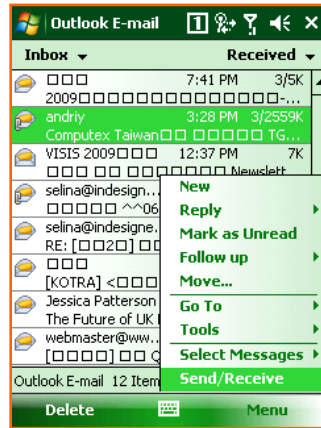
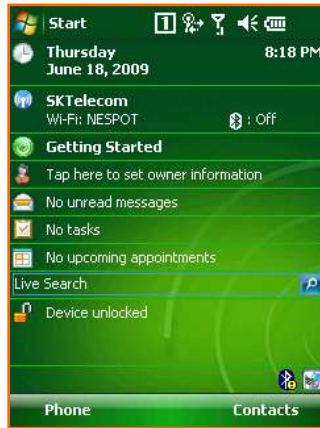
Input the 'Incoming mail, Outgoing mail, Domain' then select 'Finish'.
* For detailed setting menu, please click 'Options'.



After finishing the setting you can send and receive E-mail using the e-mail account.

Browsing the Web Site (5)

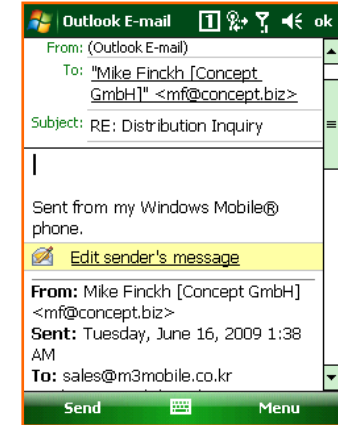
- To send and receive an E-mail



< To receive an e-mail>

Select the 'Message' on the 'Today'

Select the 'Send / Receive' in the 'Menu' and check the received mail.



<To send an e-mail>

After process the 'Message' program , select the 'New' .

You can send an e-mail when you select the 'Send' after writing a new e-mail.

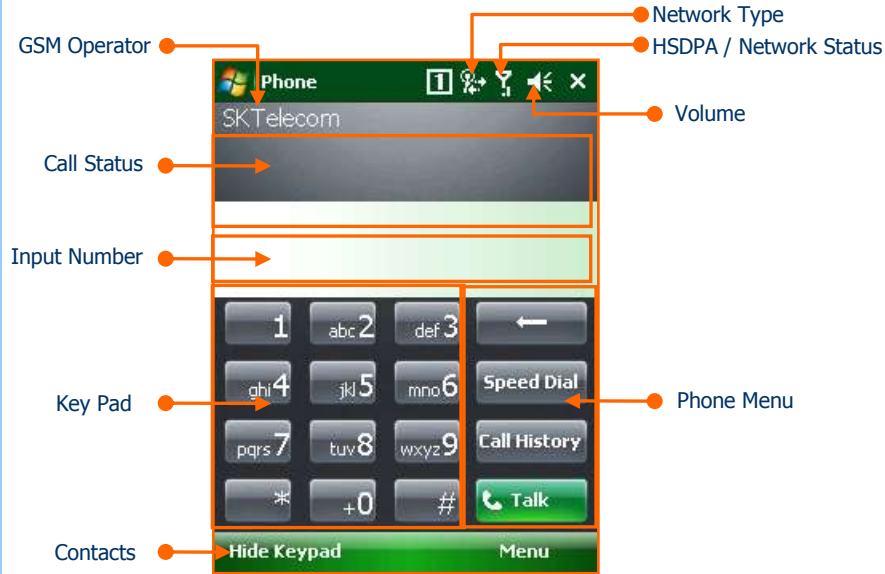


5. How to use the Phone

- Init Screen
- Phone Control
- Phone call and receive
- Phone book
- SMS send and receive
- Phone functions
- Phone setting

Init Screen

- Phone Main Screen



GSM Operator	It indicates the current Network Provider.
Call Status	It shows Call Status.
Input Number	It shows Inputted Numbers.
Key Pad	It is used to dial the number and can be used as speed-dial.
Contact	It shows Phone Book Dialog.
Network Type	It displays the availability of GPRS and EDGE / HSDPA connection.
GSM/Network Status	It indicates the signal strength.
Volume	It is Volume on/off and vibrate
Phone Menu	Talk, End, Speed Dial, Call History, etc menu...

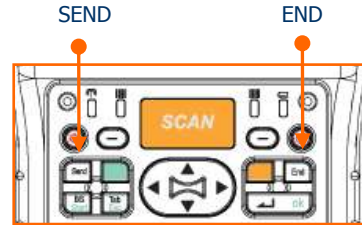
Phone Control

- Phone Program On/Off



You can turn on and off phone in Wireless Manager

- Phone Call Send/End



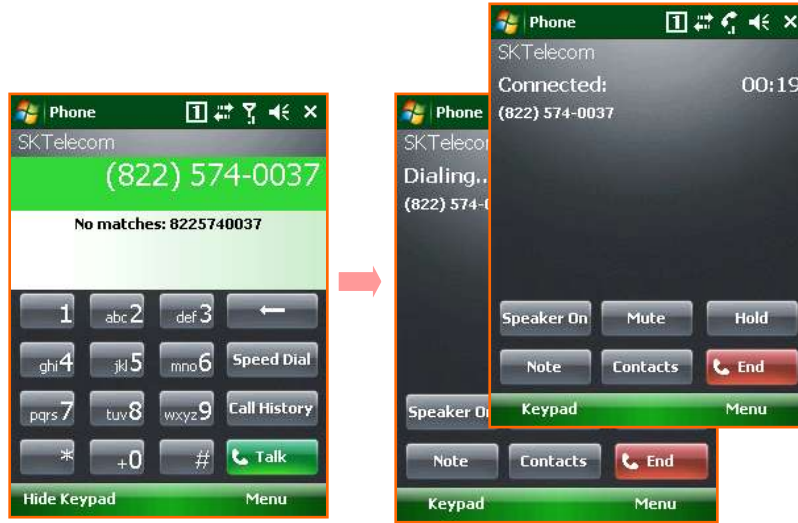
Select the SEND and END button like the picture above to start and finish the Phone program.



Tap the Phone button on the left bottom of the Today Screen and then you can process the Phone program. Also you can finish the program using the X button.

Phone Call and Receive

- Phone Call



To make a call:

1. Input number via program keypad or device keypad.
2. Make a call by pressing the 'Talk' button on the program, or pressing 'SEND' button on the device.

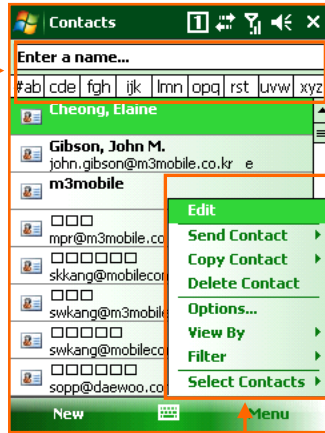
To hang up:

Press the 'END' button on the program or on the device.

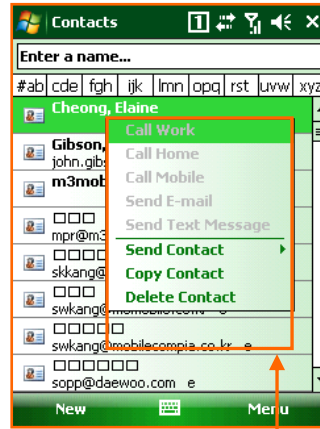
Phonebook

- To use Phonebook

Searching
A name or
Number.



Contacts Menu



Contacts Option

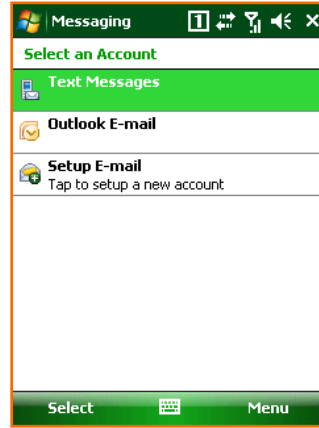
Searching Contacts		You can search the contacts by writing the name and number or tapping.
Contacts Menu	New Contact	Input the new contact
	New SIM Contact	Input the contact to the SIM Card.
	Send Contact	Transmit the information of Contact by BEAM or SMS.
	Copy/Delete	Copy or delete the Contact
	Options	Set the Options for Contact.
	View By	See the Contact by Type (Name , Company, Number ...)
	Filter	Filter the information you want.
Contacts Option	Call W/H/M	Call by the number on the Contact.
	Send E-mail	Send an E-mail by the address on the Contact.
	Send SMS	Send SMS by the number on the Contact.
	Add to Speed Dial	Add the number on the Contact to Speed Dial.
	Send Contact	Send the information of Contact by BEAM or SMS.
	Copy/Delete	Copy and Delete the Contact.

SMS send and receive

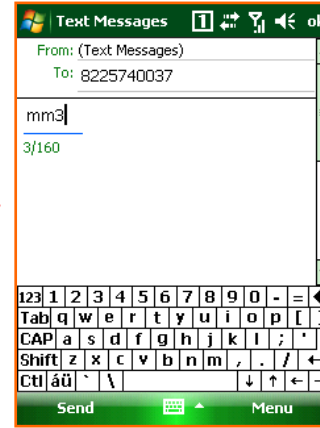
- How to send SMS



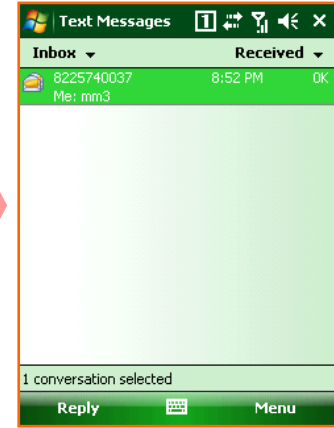
Select 'message information' menu on the main screen to send SMS. You can also send SMS by selecting 'SMS send' menu on Contacts or any other applications.



Change to the 'Text Messages' on the Message Program like the picture above and tap the 'New' on the bottom.



Input the phone number and message. Tap the send to send SMS.



You can see the pop-up screen when SMS is sent successfully.



6. Usage of Device

- Camera
- Bluetooth
- GPS
- Scanner

To use the Camera (1)

- Notice before taking pictures
 - The camera equipped with the MM3 is supported 2 mega pixels.



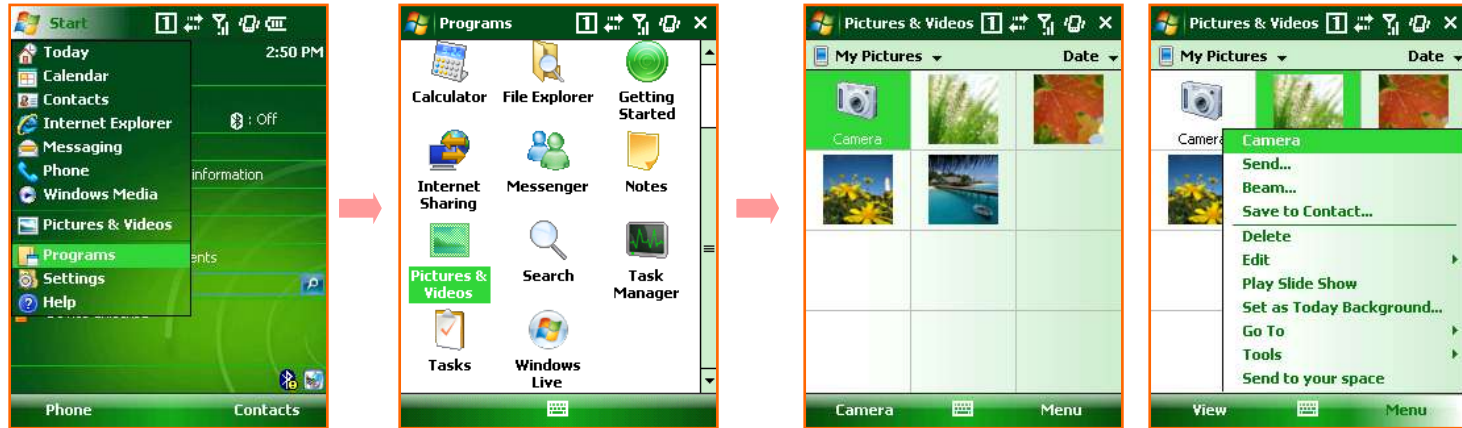
Camera Program Processing Screen

Function	Still	Video	Comment
Mode	Normal, Burst, Timer	N/A	Setting for taking photo
Brightness	-3, -2, -1, 0, +1, +2, +3		Setting for Brightness
Resolution	QCIF, QVGA, CIF, VGA, SVGA, SXGA, UXGA	QCIF, QVGA	Setting for size
White Balance	Automatic, Sunny, Cloudy, Fluorescent, Incandescent		Setting for White balance
Flash	Flash ON, Flash OFF		Setting for Flash ON/OFF
AF	Trig AF		Setting for Auto Focus

- ⚠ Camera is optional. On the device with no built-in camera, Camera function can not be used.
- ⚠ QCIF(176x144), QVGA(320x240), CIF(352x288), VGA(640x480), SVGA(800x600)
SXGA(1280x960), UXGA(1600x1200)

To use the camera (2)

- To process the camera program
 - You can process the camera program when you tap the camera button or tap the camera icon on the 'picture or video'.



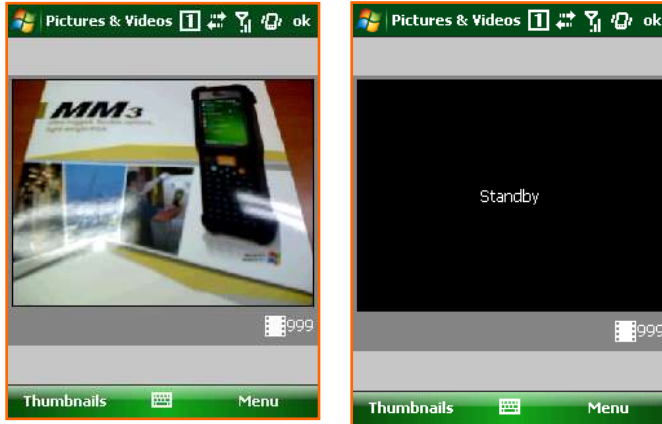
Select the 'Start > Programs > Pictures & Video'.

You can process the camera program when you select the camera icon on the Picture & Video or select the camera icon in the menu.

⚠ Tap the 'Menu > Options ... > Camera Tab' and then you can set the route of the storage memory , name and quality. You can set the Video on the Video Tab.

To use the camera (3)

- Taking a Still photo



Execute the camera program first. Move around to focus the desired item.

Finally press the camera button to take a picture.

After executing the camera program, Preview mode will be changed to standby mode after certain amount of time.

In order to start Preview Mode again, just tap the screen or press the camera button.



After taking a picture, the captured image will be displayed on the screen.

If you want to execute the camera program, tap the camera button at the bottom or click the camera icon on the left of window.

You can see the list of pictures taken previously by tapping 'Thumbnails' in the Camera shooting mode.

To use the camera (4)

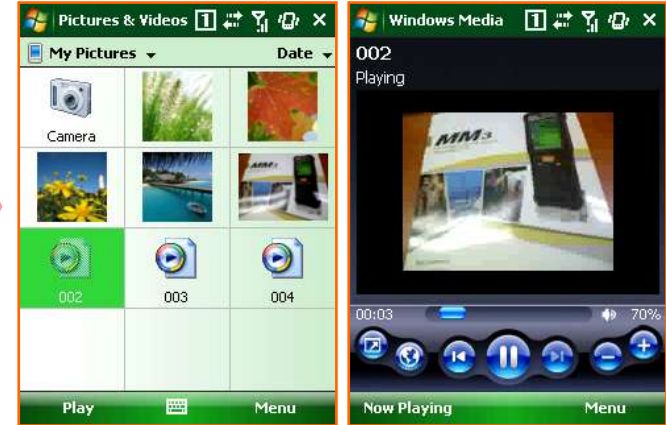
- Taking videos



If you want to take a video, select 'Menu > Videos' after executing the camera program.



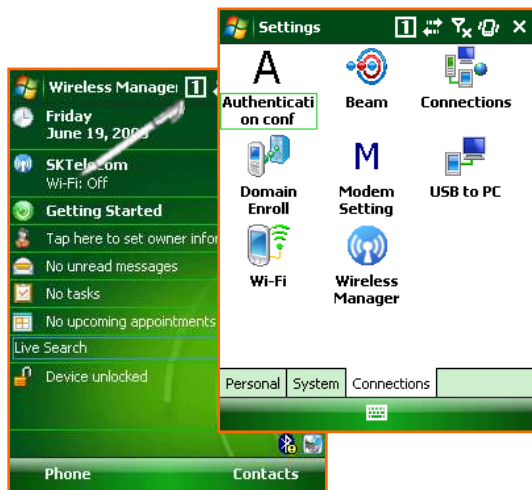
While taking a video, you can either stop (by tapping stop button) or pause. (by tapping pause button)



If you want to watch the video taken, Select the 'Thumbnails' first to see the list of video files available. When you select the video you want, you can play the video recorded.

Bluetooth Communication (1)

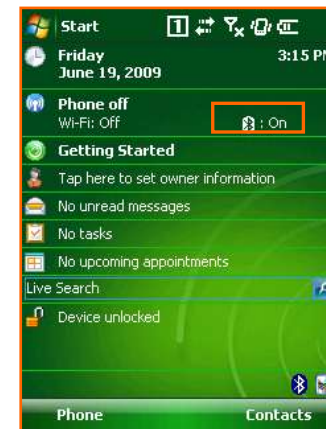
- Bluetooth On / Off



On the 'Today Main Screen', select the Wireless State bar or Tap 'Start > Settings > Connections' and select 'Wireless Manager'.



To turn on/off Bluetooth, tap the Bluetooth on the Wireless Manager



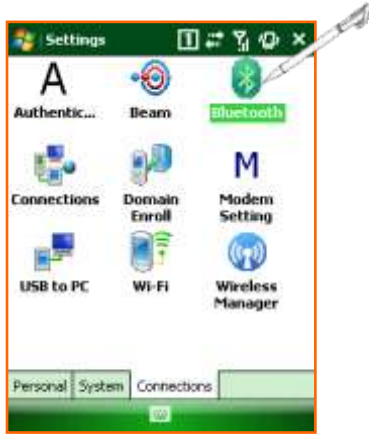
The status of Bluetooth can be seen on the wireless status bar on the main screen.

- ⚠ Bluetooth is optional. Device without built-in Bluetooth can not use Bluetooth service.
- ⚠ Bluetooth support the transmission and reception of files between the serial connecting service and Windows Mobile device.

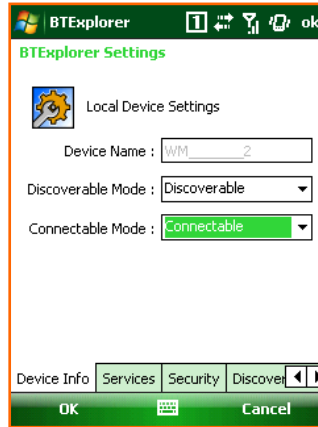
Bluetooth Communication (2)

- Setting the Bluetooth

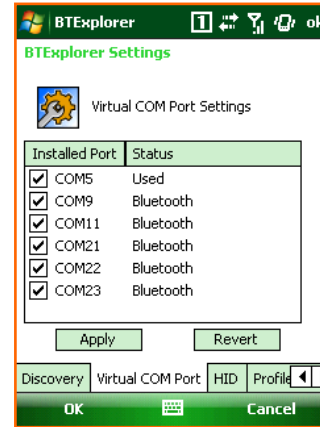
- On the Bluetooth setting screen, you can set the Mode, connecting to BT device and COM settings



You can set the Bluetooth mode and establish connection when you tap the 'Bluetooth' icon on the Start > Settings > Connections.



In the device tab, you can search and connect to other Bluetooth devices.



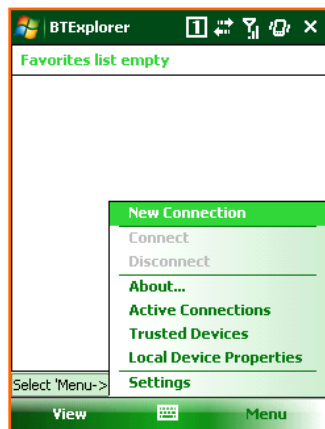
In the COM Ports tab, you can set incoming Port and outgoing Port.

Bluetooth Communication (3)

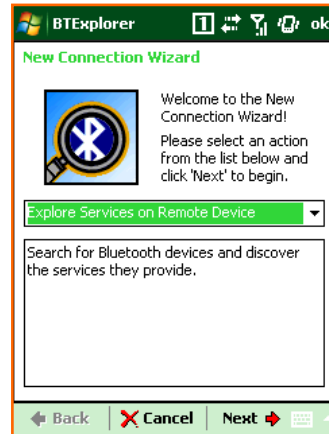
- To connect the Bluetooth
 - you can establish the connection by searching, matching pin code and selecting the service.



You can search the Bluetooth device available when you select the 'Add new device...' on the Device Tab. Select a device to connect with and tap 'Next'. Also you can select the 'Refresh' button if there is no device available.



Enter a Passcode to establish a secure connection. The passcode can be fixed one or the one which is negotiated between two parties in before hand.



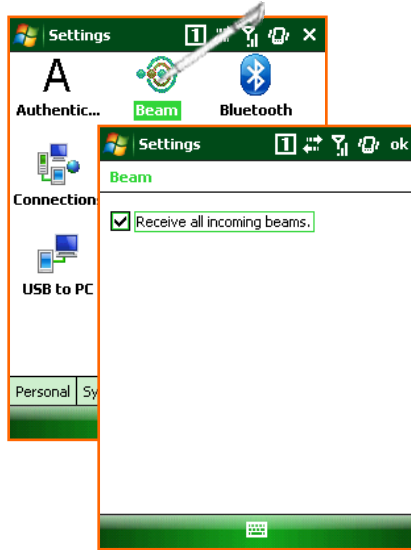
It shows the service available on the Bluetooth device.



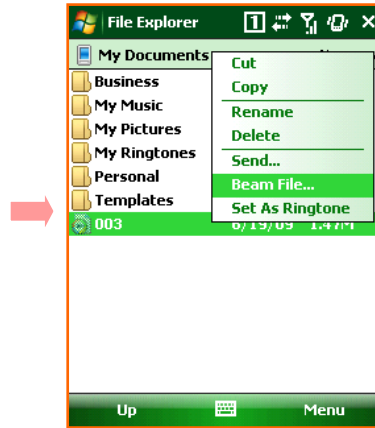
It shows the registered devices. To add more device, please tab 'Add new device'.

Bluetooth Communication (4)

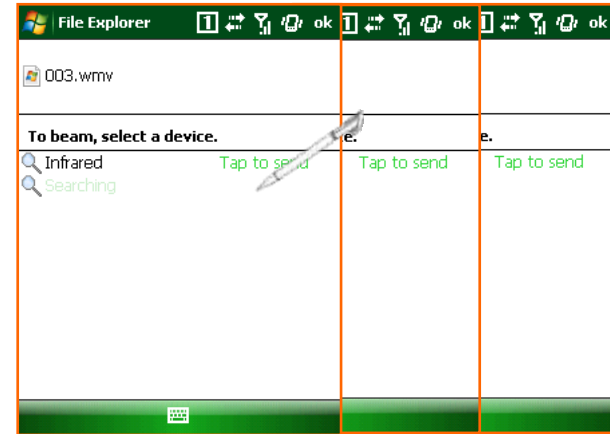
- Transferring files via Bluetooth connection.
 - It is possible to transfer files between Windows Mobile devices via Bluetooth.



In order to transfer files via Bluetooth connection, please go to 'Start > Settings > Connections > Beam' and then Check the 'Receive all incoming Beams'.



Select the file you want to transfer in the File Explorer. Press the file name long and tab 'Beam File'.

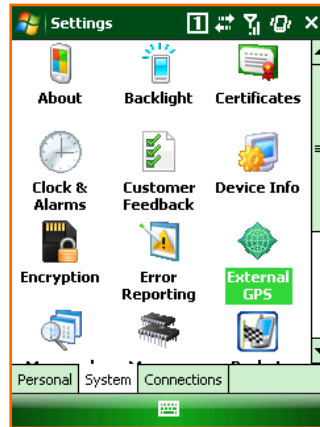


By tapping 'Beam File', the list of available Bluetooth devices shown. Please choose the device to transfer the file to.

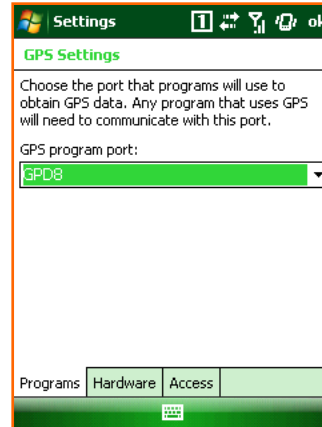
To use the GPS

- To set the GPS

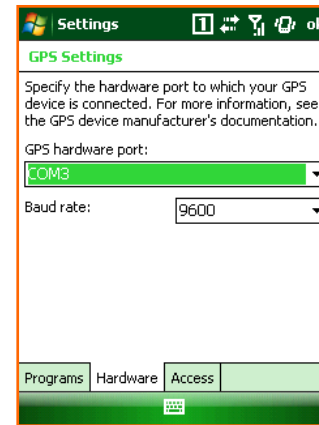
- Tap the 'Start > Settings > System Tab > GPS' and then you can set the information related to the GPS.
- You don't have to set additional information when there is a single program which uses GPS data. When there are more than one program which use GPS data, you need to set the program port and hardware port required for each program.



Select the GPS on the System Tab.



Set the GPS Program Port which is not yet used.



Set the Hardware port of the device.
GPS hardware port for MM3 is
COM2 and with baud rate of 9600.

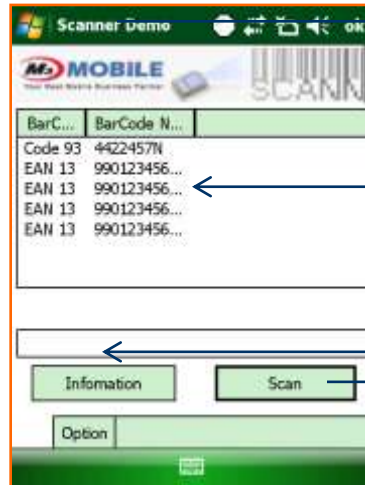
 GPS is optional. GPS feature is not available on the unit with no GPS module integrated.

To use the Scanner (1)

- To scan the barcode, there are two scanner programs installed on the device
 1. M3 ScanTest
 - It is a sample test program. It is only for testing the scanning feature of the device.
It can not be used for business application.
 2. ScanEmul
 - It is a program which can be used to output the scanned data on the application.
(like MS Word-Pad, Internet Explorer or Business Application)
 - The ScanEmul program must be running if you want to scan barcodes.

To use the Scanner (2)

- This program is located under Flash Disk -> Scanner folder



You need to select this tab to configure Settings

The Scanned Data will be displayed here

You can get the information like Firmware version, DLL version and Decoder version.

It is to trigger the scan beam.
You can also Use 'S' button on the right side of Device to trigger it.

To use the Scanner (3) Scan Test

- How to use scanner
 - Usage of 1D Scanner (MC-7100S, MC-7500S)



Correct way

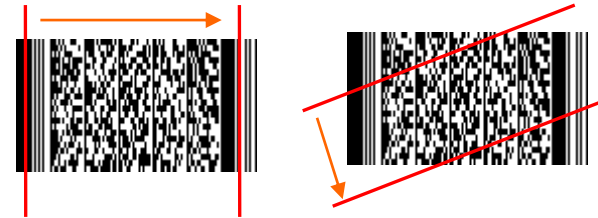


Incorrect way

- Usage of 2D Scanner (MC-7700S)



Correct way



Incorrect way

- ⚠ Scanner is optional. You can not use scan feature with no scanner enabled device.
- ⚠ 2D Barcode Scanner is optional. Only with 2D Barcode scanner enabled device, you can do 2D barcode scan. (MC-7700S)



M3 in the World



www.m3mobile.co.kr

copyright ©M3 Mobile Corporation 2008 All Rights Reserved